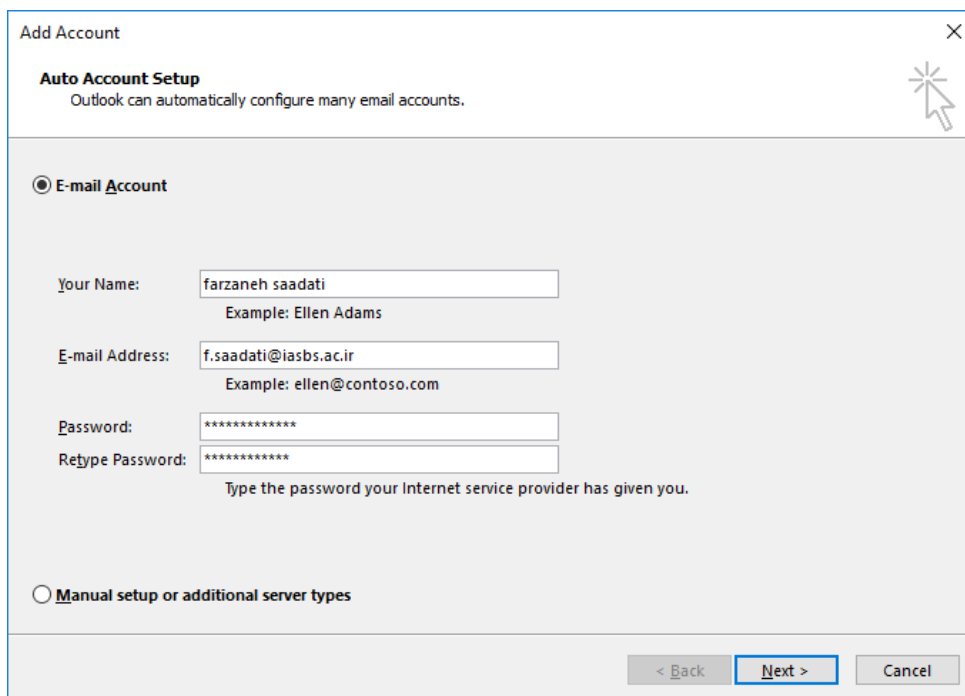
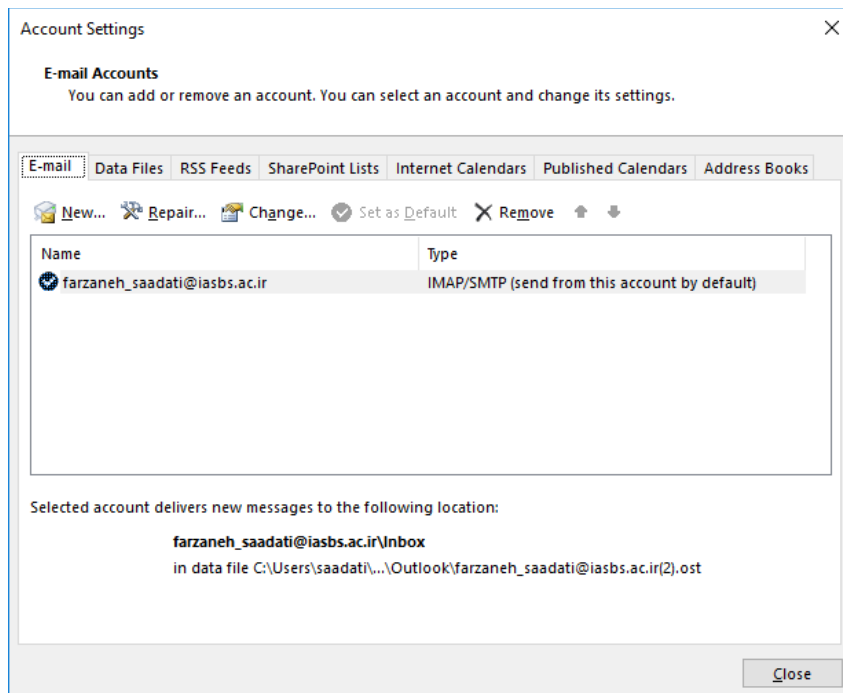
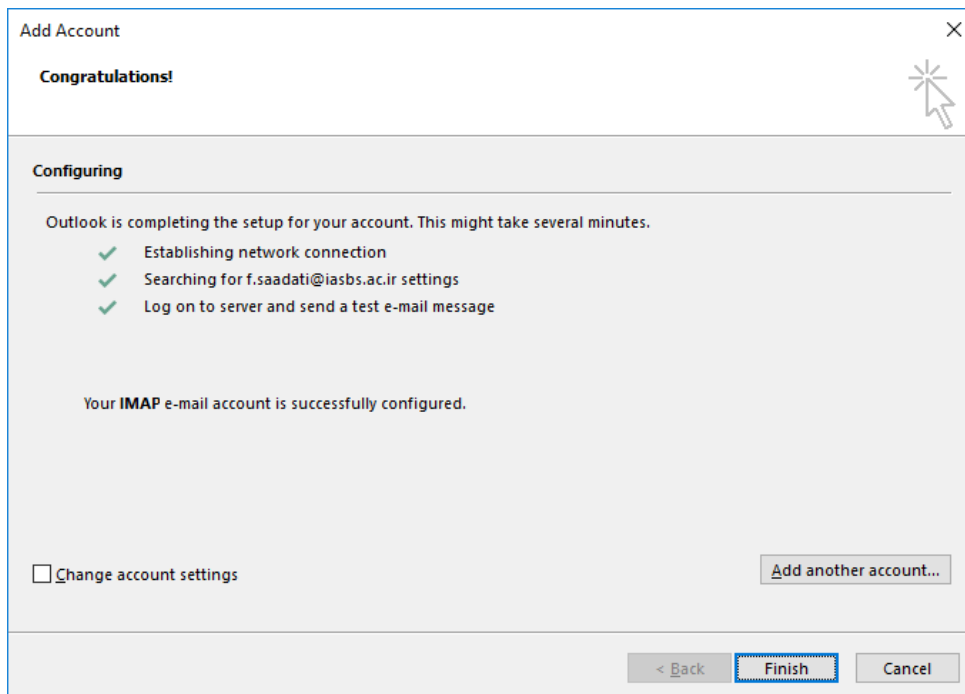
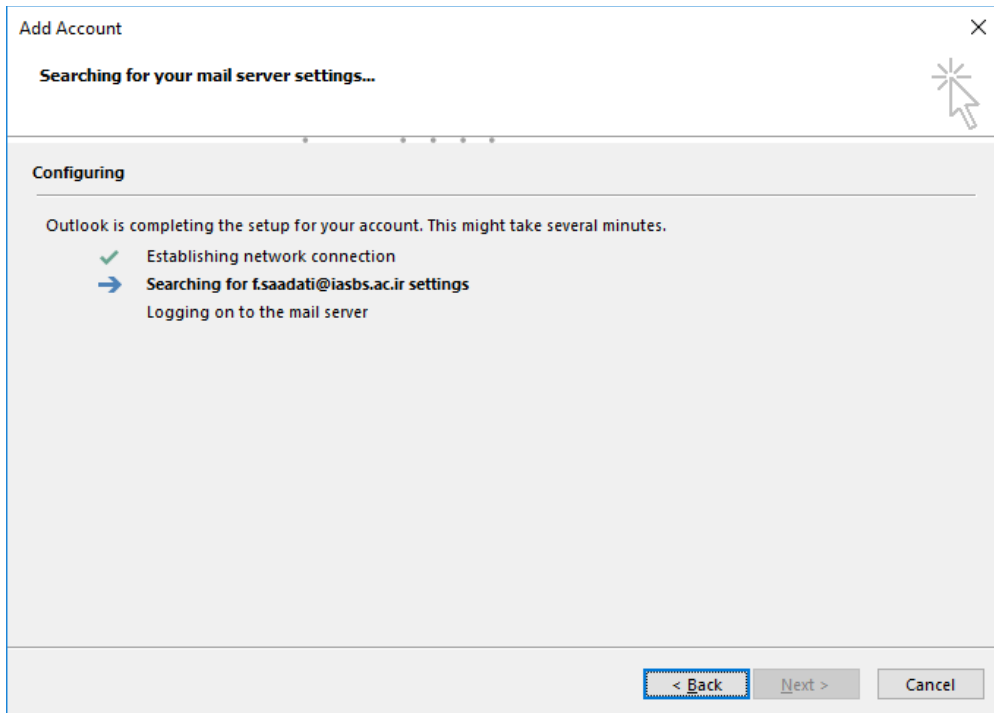
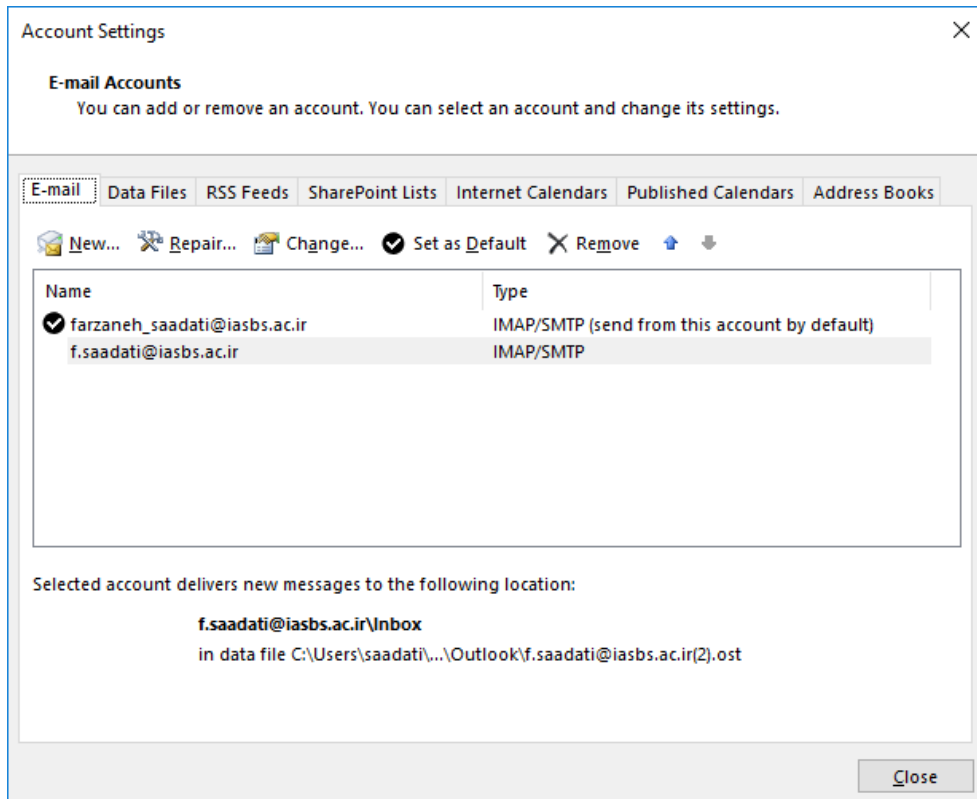
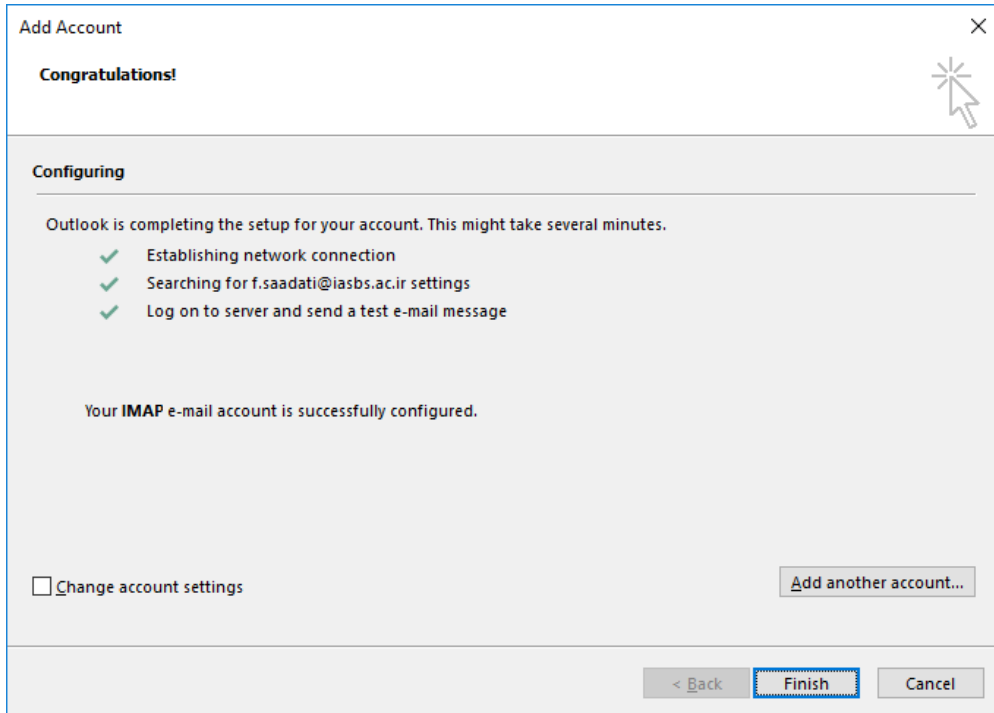


## Outlook configuration for iasbs.ac.ir

File > Account setting > new







Double click on your email account

Change Account

**POP and IMAP Account Settings**  
Enter the mail server settings for your account.

**User Information**

Your Name:

Email Address:

**Server Information**

Account Type:

Incoming mail server:

Outgoing mail server (SMTP):

**Logon Information**

User Name:

Password:

Remember password

Require logon using Secure Password Authentication (SPA)

**Test Account Settings**

We recommend that you test your account to ensure that the entries are correct.

Automatically test account settings when Next is clicked

Mail to keep offline: All

< Back 

### Select more settings...

Internet E-mail Settings

General **Outgoing Server** Advanced

Mail Account

Type the name by which you want to refer to this account. For example: "Work" or "Microsoft Mail Server"

Other User Information

Organization:

Reply E-mail:

Internet E-mail Settings

General **Outgoing Server** Advanced

My outgoing server (SMTP) requires authentication:

Use same settings as my incoming mail server

Log on using

User Name:

Password:

Remember password

Require Secure Password Authentication (SPA)

Internet E-mail Settings

General **Outgoing Server** Advanced

Server Port Numbers

Incoming server (IMAP):

Use the following type of encrypted connection:

Outgoing server (SMTP):

Use the following type of encrypted connection:

Server Timeouts

Short  Long 1 minute

Folders

Root folder path:

Sent Items

Do not save copies of sent items

Deleted Items

Mark items for deletion but do not move them automatically  
Items marked for deletion will be permanently deleted when the items in the mailbox are purged.

Purge items when switching folders while online