



Steps to install a network printer in Windows 10

Please use the following guide to use the shared printer in each section:

IP address table of shared printers (Table 1)	
Physics professors printer	192.168.9.4
Third floor physics professors printer-Over the guard office	192.168.9.29
Third floor physics professors printer	192.168.9.34
Math professors printer	192.168.9.6
Chemistry professors printer	192.168.9.7
Chemistry professors printer-New	192.168.9.33
Earth science professors printer	192.168.9.9
IT professors printer	192.168.9.30

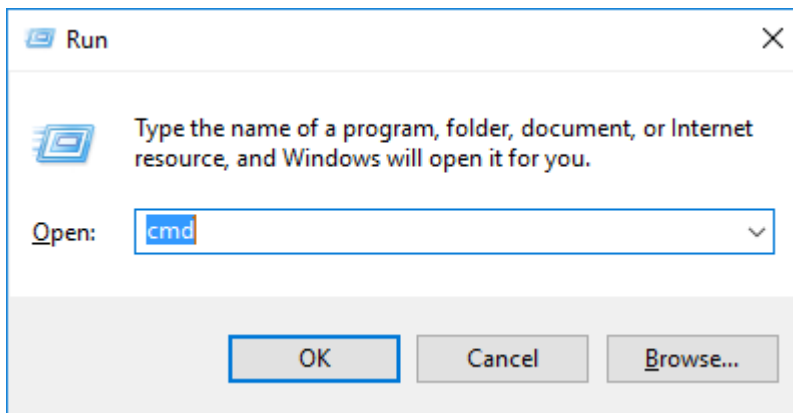
Please note that to access the printer, each section must have the IP address of your device as follows:

IP addresses allowed to use the printers of each section (Table 2)	
Physics professors	192.168.14.X
Math professors	192.168.11.X
Chemistry professors	192.168.17.X
Earth Sciences professors	192.168.50.X , 192.168.51.X
IT professors	192.168.11.X

** You can see your IP address in the CMD section of your computer by typing the ipconfig command.



Steps to install a network printer in Windows 10



```

Select C:\WINDOWS\system32\cmd.exe
Microsoft Windows [Version 10.0.14393]
(c) 2016 Microsoft Corporation. All rights reserved.

C:\Users\user>ipconfig

Windows IP Configuration

Ethernet adapter Ethernet:

    Connection-specific DNS Suffix  . : 
    Link-local IPv6 Address . . . . . : fe80::994c:dd57:9b2b:bd2b%10
    IPv4 Address. . . . . : 192.168.10.20
    Subnet Mask . . . . . : 255.255.255.0
    Default Gateway . . . . . : 192.168.10.1

Ethernet adapter Ethernet 2:

    Connection-specific DNS Suffix  . : iasbs
    Link-local IPv6 Address . . . . . : fe80::6866:deb3:7e67:7c2b%5
    IPv4 Address. . . . . : 192.168.24.20
    Subnet Mask . . . . . : 255.255.255.224
    Default Gateway . . . . . : 192.168.24.1

Tunnel adapter isatap.{5E57B6A4-1167-427A-90B7-37C285E278EC}:

    Media State . . . . . : Media disconnected
    Connection-specific DNS Suffix  . : 

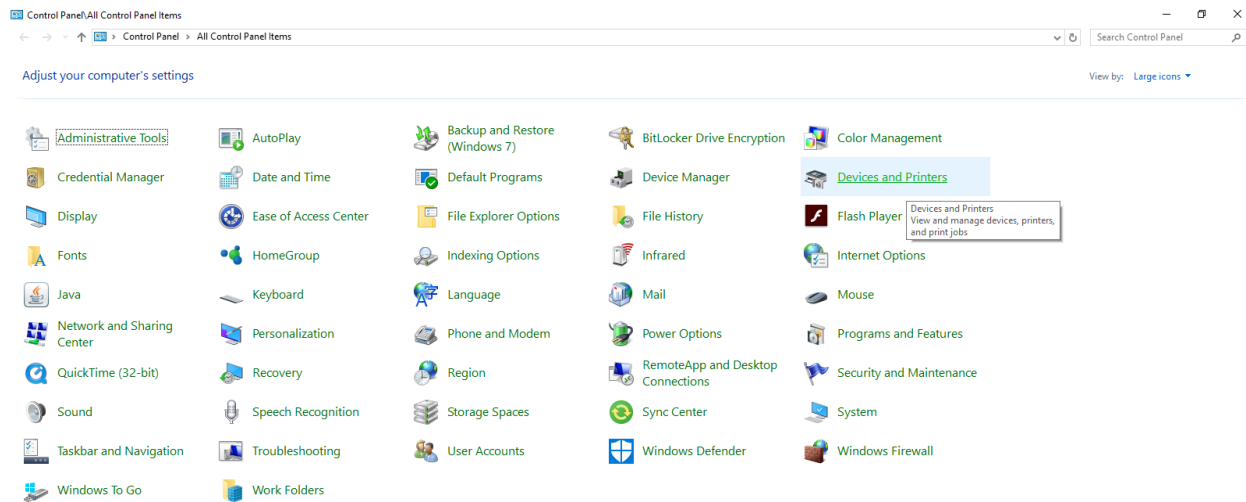
Tunnel adapter isatap.iasbs:
```

After checking your IP address, you will install the printer in the desired section.

From the Control Panel section, go to the section Adding a new printer or device.



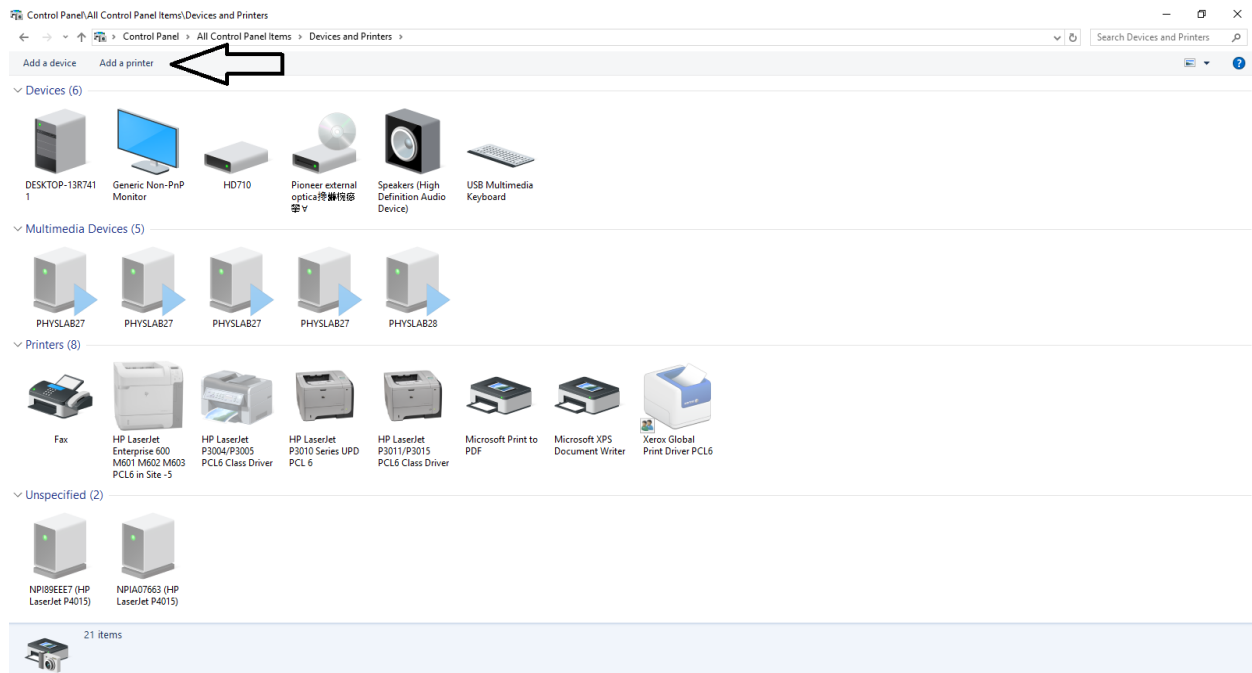
Steps to install a network printer in Windows 10



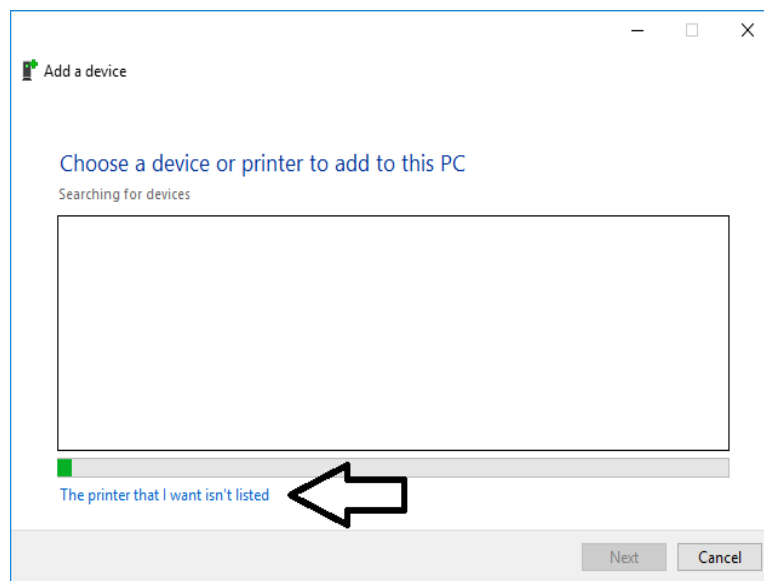
Click on Devices and Printers and in the window that opens, click on Add a printer.



Steps to install a network printer in Windows 10

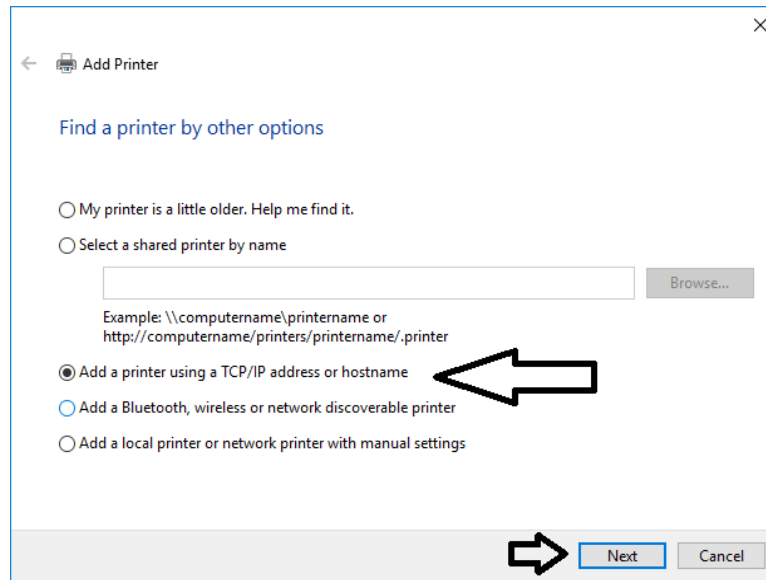


In the window that opens, click on the specified link.



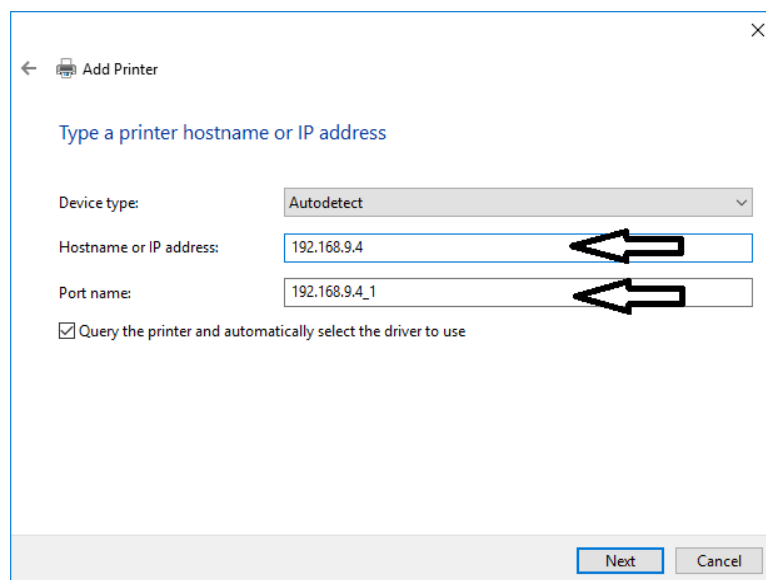


Steps to install a network printer in Windows 10



In the next step, complete the required items as follows:

Hostname or IP address based on table number one (depending on which section you are in) and Port name is completed by default.





Steps to install a network printer in Windows 10

← Add Printer

You've successfully added HP LaserJet 600 M602 UPD PCL 6

Printer name:

This printer has been installed with the HP Universal Printing PCL 6 driver.

Next Cancel

← Add Printer

Printer Sharing

If you want to share this printer, you must provide a share name. You can use the suggested name or type a new one. The share name will be visible to other network users.

☒ Do not share this printer

☐ Share this printer so that others on your network can find and use it

Share name:

Location:

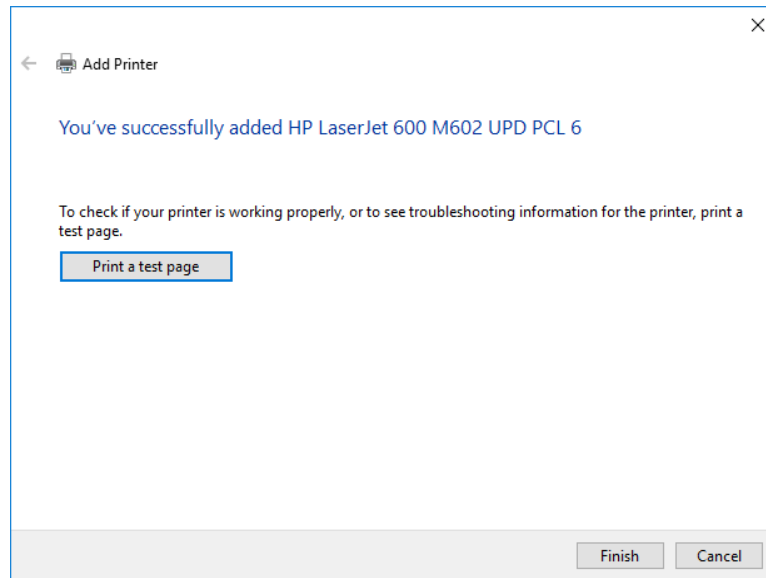
Comment:

Next Cancel



**Institute for Advanced Studies
in Basic Sciences**
Gava Zang, Zanjan, Iran

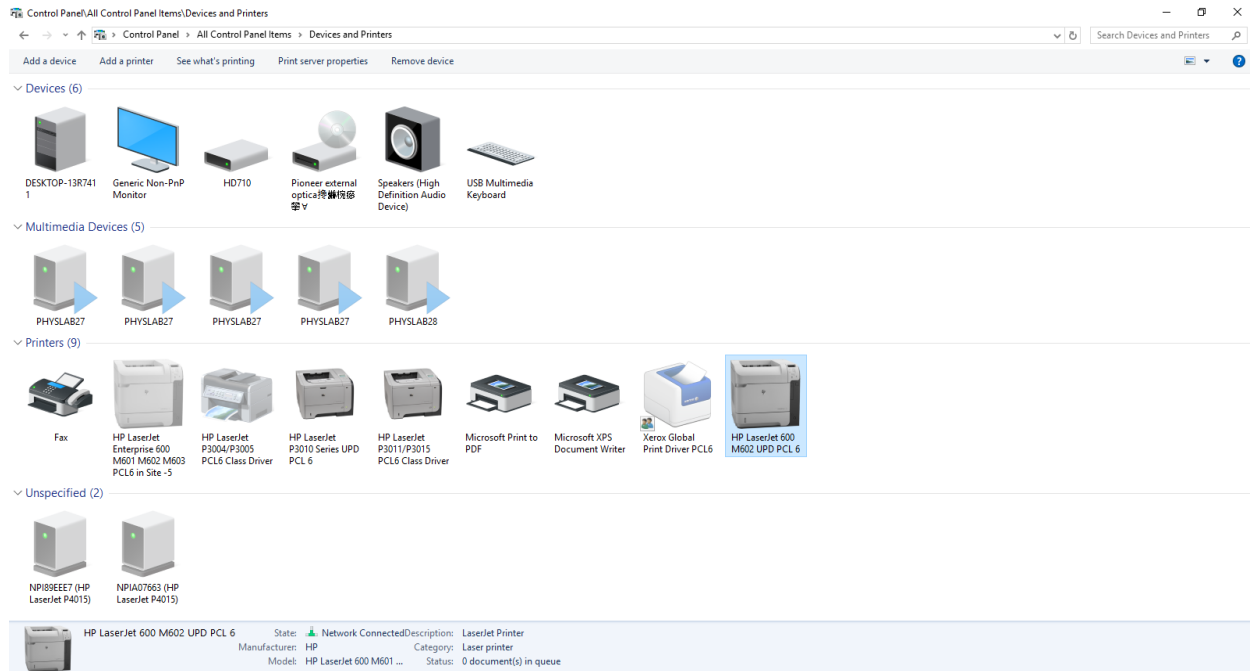
Steps to install a network printer in Windows 10



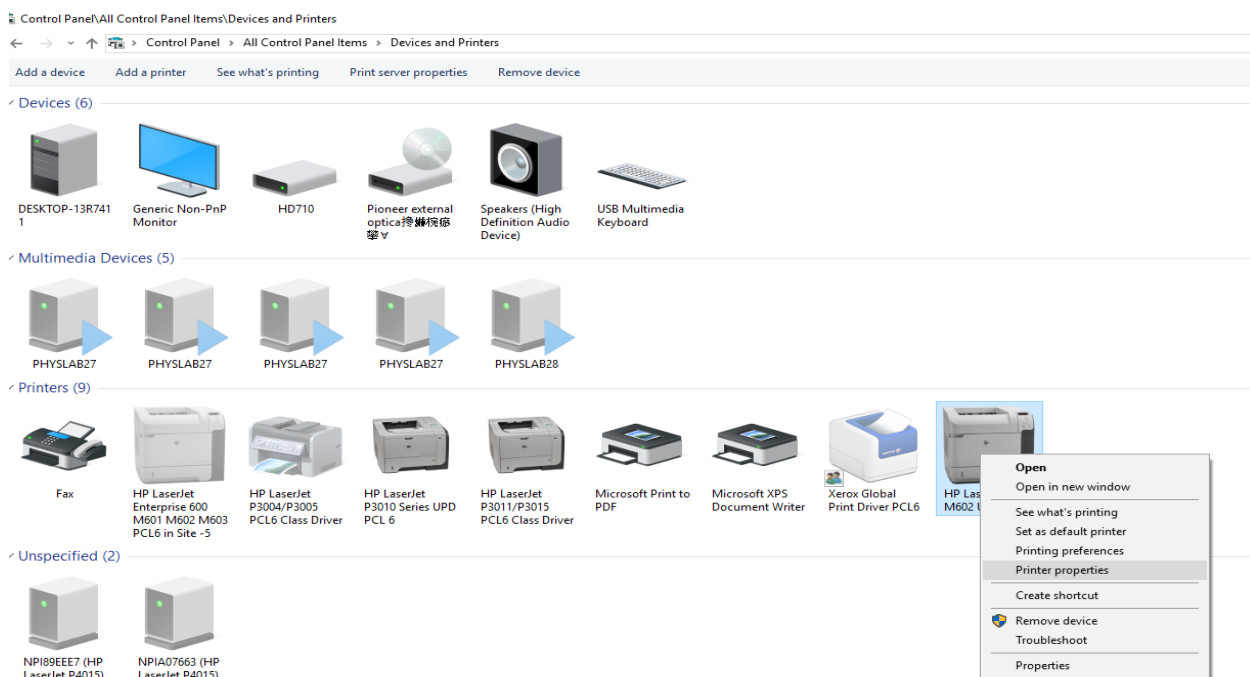
Go back to the list of printers in the Control Panel to see the newly added printer



Steps to install a network printer in Windows 10



Right-click on the printer and select Printer properties.

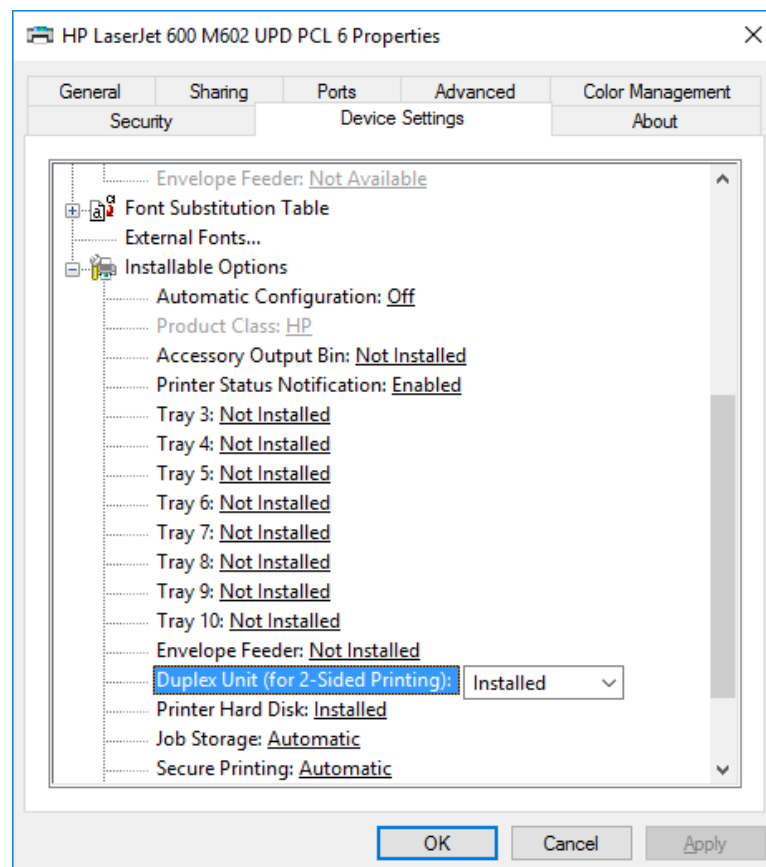




Steps to install a network printer in Windows 10

In the window that opens, in the Device Setting section, set the Duplex Unit option to Installed

** This will allow you to print double side.



Your printer is ready to use.