



## Steps to install a network printer in Windows 7 - if not automatically installed

Please use the following guide to use the shared printer in each section:

IP address table of shared printers (Table 1)	
Physics professors printer	192.168.9.4
Third floor physics professors printer-Over the guard office	192.168.9.34
Third floor physics professors printer	192.168.9.29
Math professors printer	192.168.9.6
Chemistry professors printer	192.168.9.7
Earth science professors printer	192.168.9.9
IT professors printer	192.168.9.30

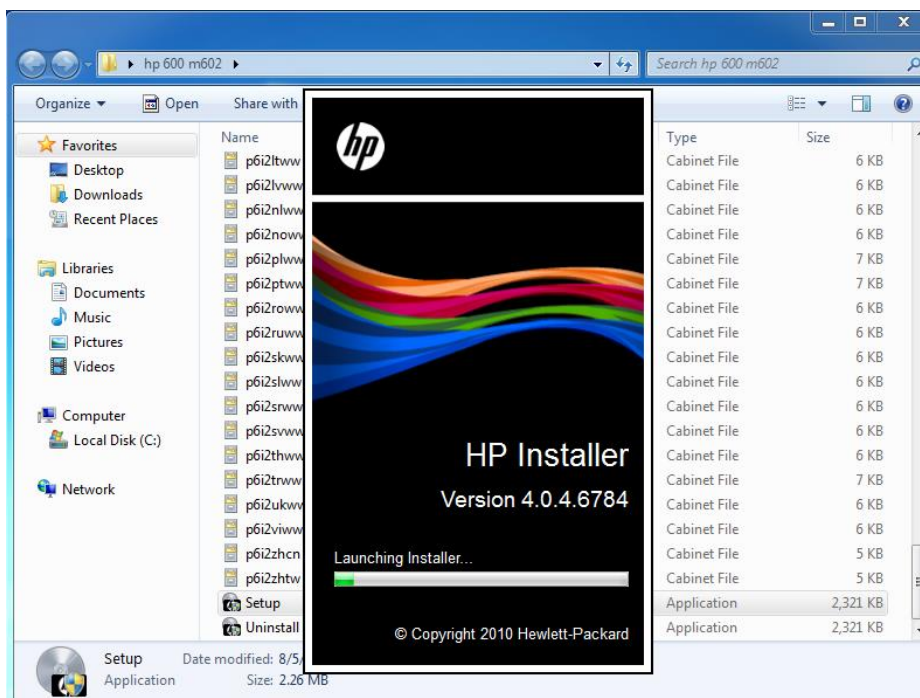
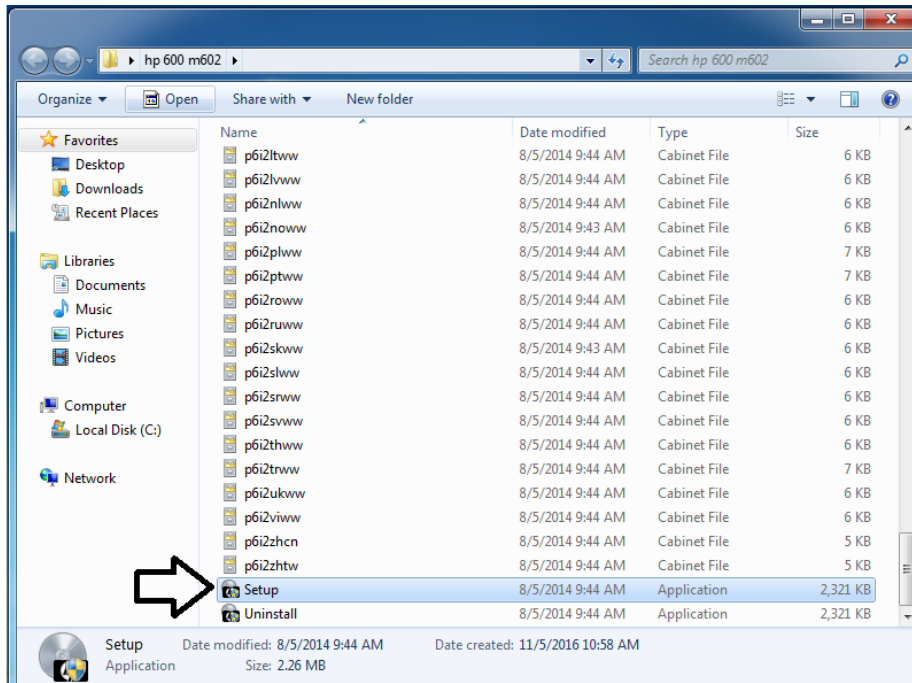
Please check your computer's IP address before installing the printer. It should look like as follows (based on your section):

IP addresses allowed to use the printers of each section (Table 2)	
Physics professors	192.168.14.X
Math professors	192.168.11.X
Chemistry professors	192.168.17.X
Earth Sciences professors	192.168.50.X, 192.168.51.X
IT professors	192.168.11.X

\*\* You can see your IP address in the CMD section of your computer by typing the ipconfig command.

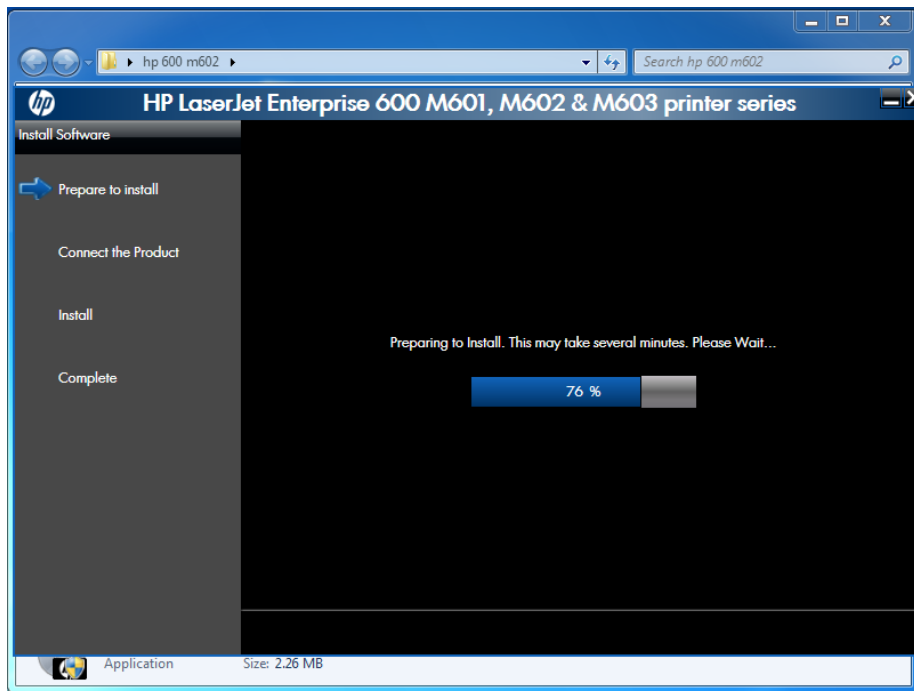
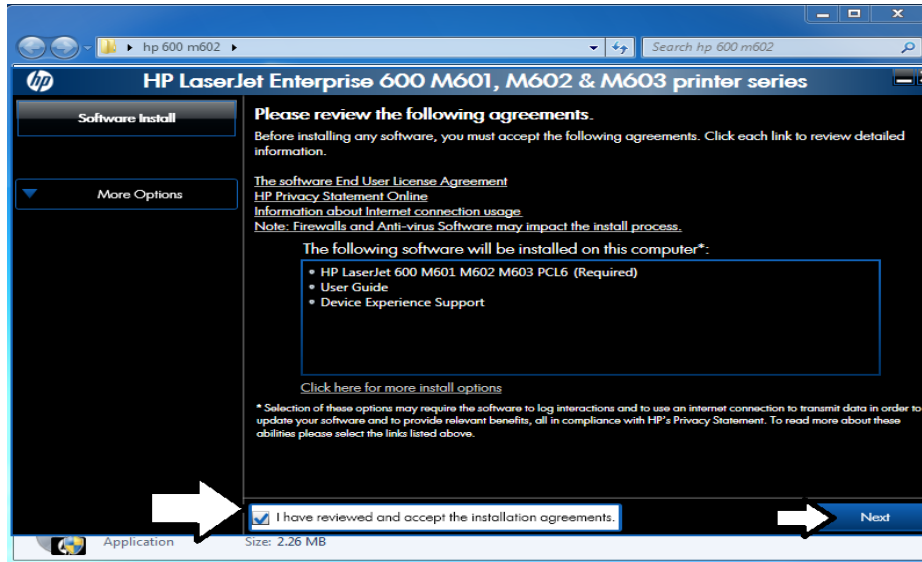


## Steps to install a network printer in Windows 7 - if not automatically installed



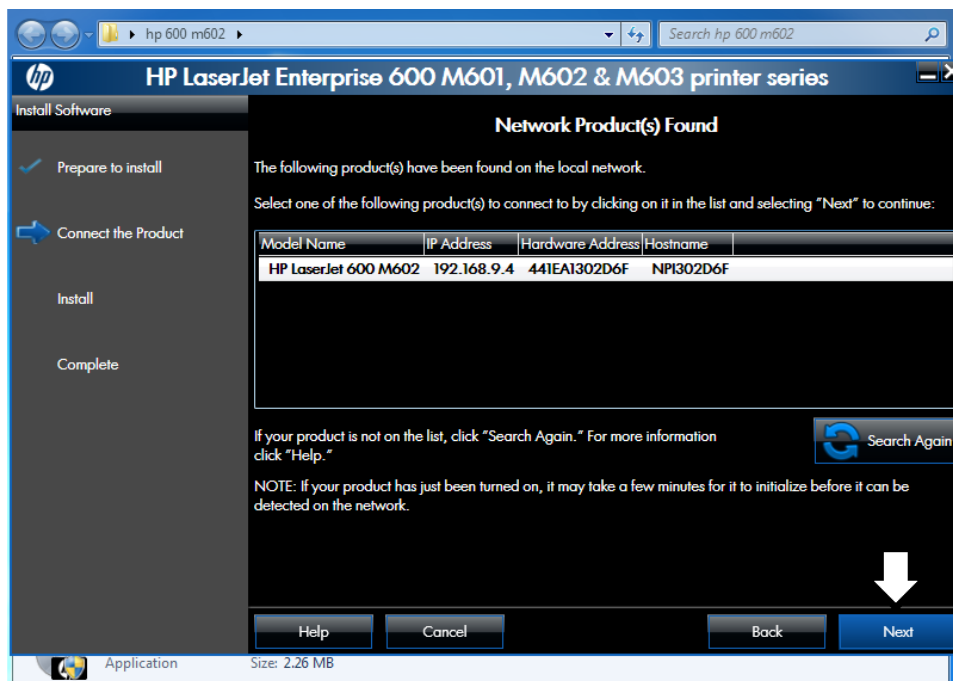
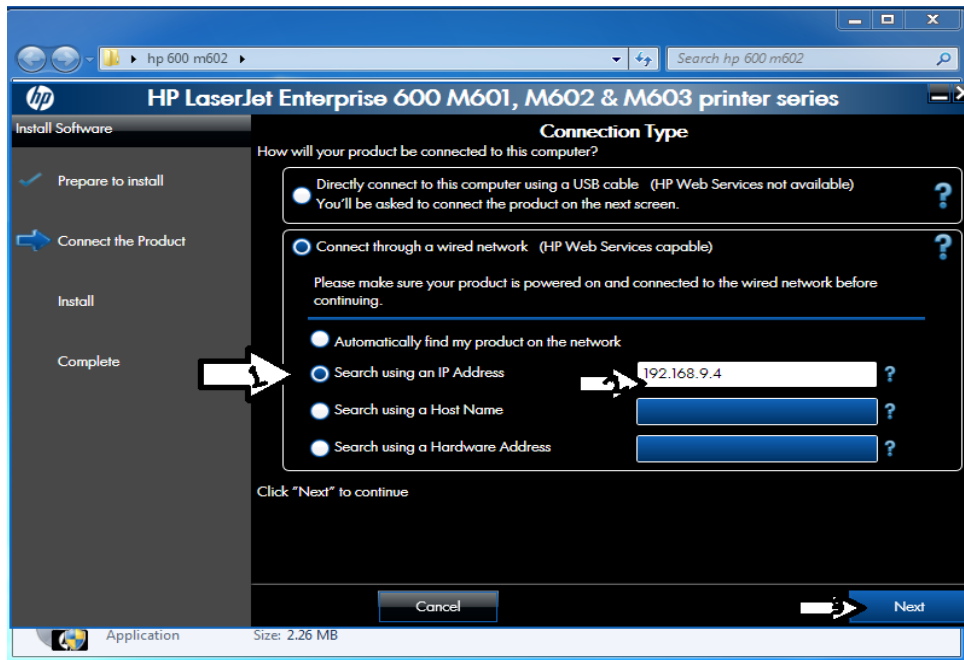


## Steps to install a network printer in Windows 7 - if not automatically installed



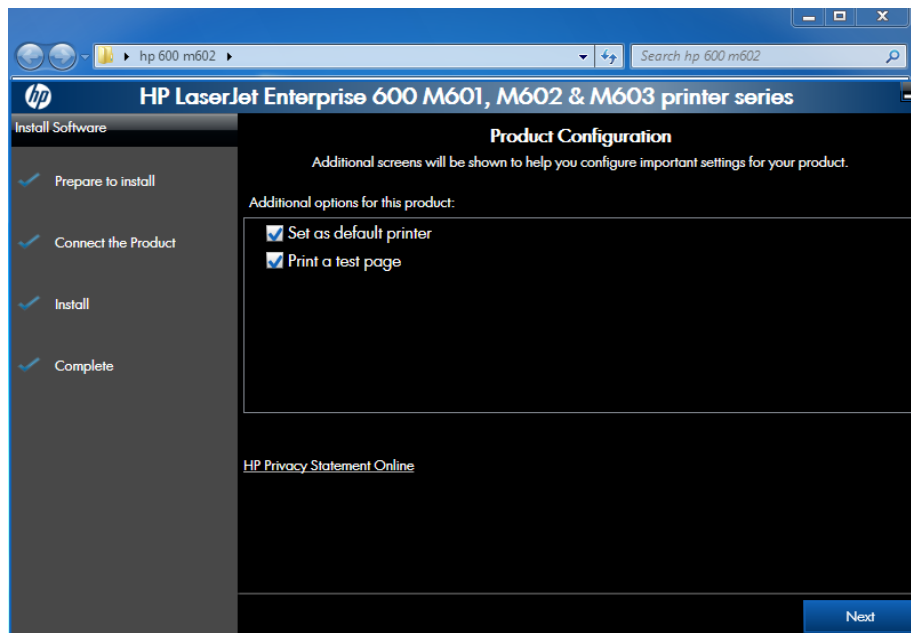
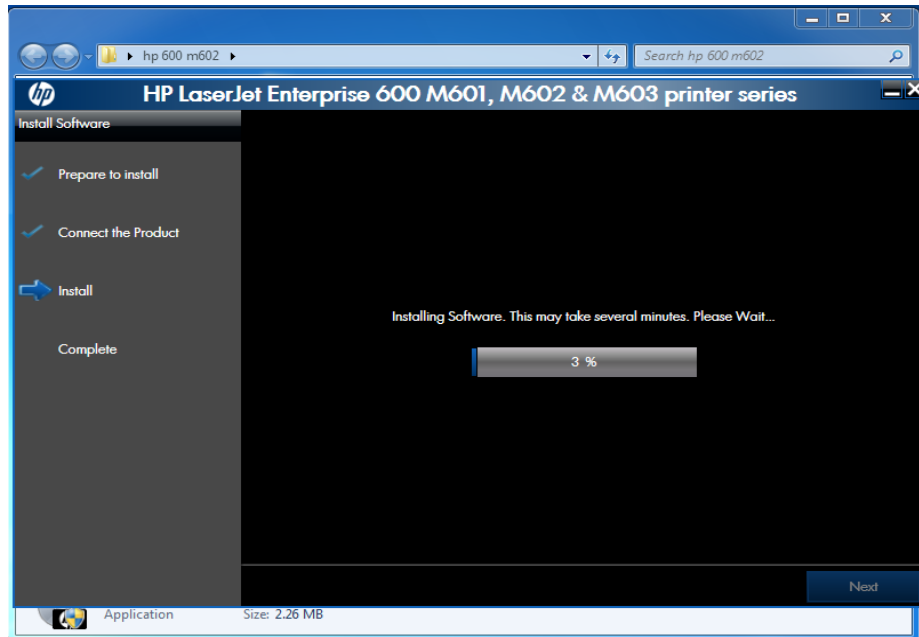


## Steps to install a network printer in Windows 7 - if not automatically installed





## Steps to install a network printer in Windows 7 - if not automatically installed



Your printer is ready to use.