



## Guide of using computing computers

First, connect to the IASBS network. If you are off campus, connect to the network using the VPN guide. See the VPN guide [here](#).

To connect remotely to computing computers, use a remote connection software, such as PuTTY or XShell, and the following command

**ssh YourUsername@ServerIP**

Then, enter your password as shown in Figure 1, and connect to the computing computer.

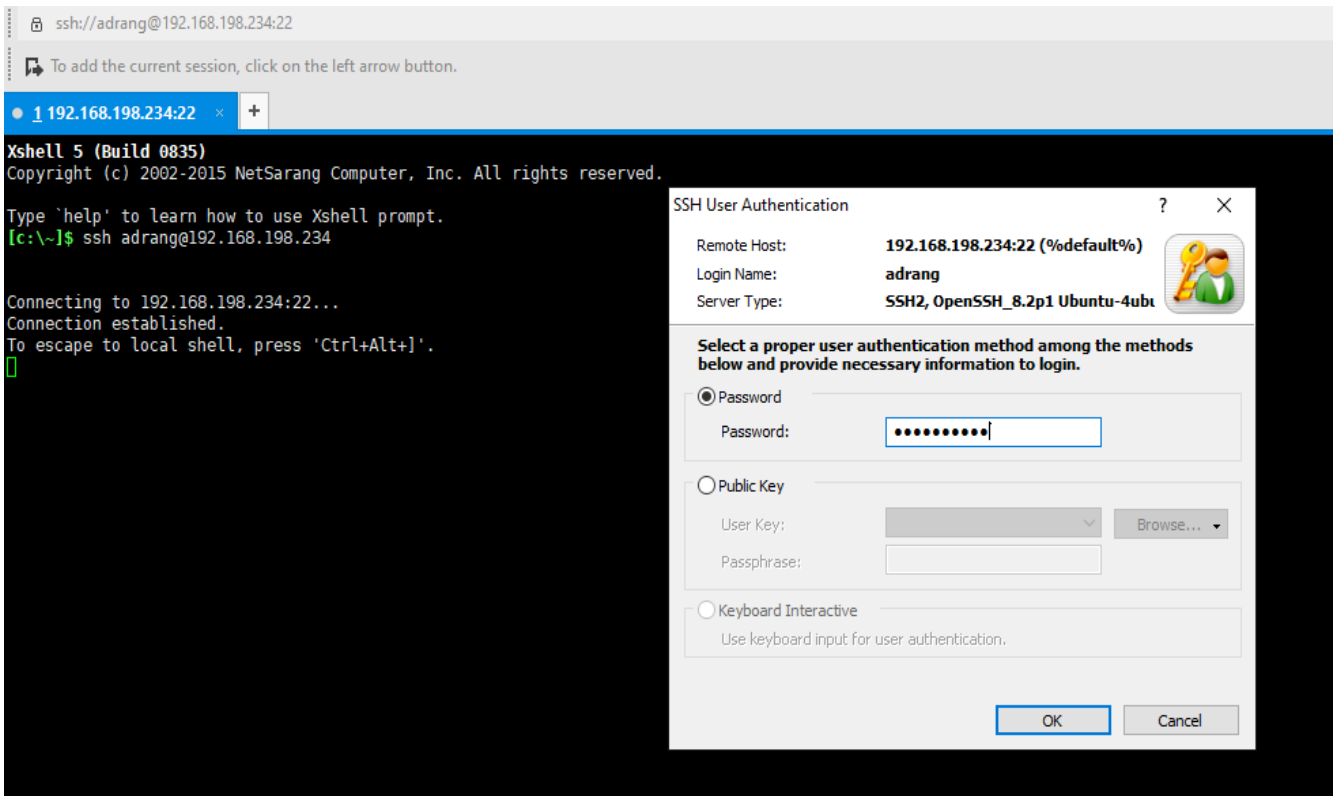


Figure 1: Connection with XShell software



## Guide of using computing computers

Table 1 shows the IP and the hardware specifications of computing computers.

**Table 1: Specifications**

	<b>HOSTNAME</b>	<b>IP</b>	<b>CPU</b>	<b>RAM</b>
01	iasbspc1	192.168.198.226	i9 16Cores	16GB
02	iasbspc2	192.168.198.227	i9 16Cores	16GB
03	iasbspc3	192.168.198.228	i9 16Cores	16GB
04	iasbspc4	192.168.198.229	i9 16Cores	16GB
05	iasbspc5	192.168.198.230	i7 8Cores	16GB
06	iasbspc6	192.168.198.231	i9 16Cores	16GB
07	iasbspc7	192.168.198.232	i7 8Cores	16GB
08	iasbspc8	192.168.198.233	i7 8Cores	16GB
09	iasbspc9	192.168.198.234	i7 8Cores	16GB
10	iasbspc10	192.168.198.235	i7 8Cores	16GB

The list of installed software is shown in Table 2.

If students need to install new software on these systems, they can ask their advisor to send the name of the software as well as the other necessary information to the computer center via email [computercenter@iasbs.ac.ir](mailto:computercenter@iasbs.ac.ir). After checking, the Computer Center will install the desired software on all systems.



## Guide of using computing computers

Table 2: List of installed software

<b>Software</b>
<b>Gcc9</b>
<b>Python3.8</b>
<b>Python2.7</b>
<b>Python3-pip</b>
<b>Cmake</b>
<b>Matlab</b>
<b>Nodejs</b>
<b>Npm</b>
<b>Jupiter</b>
<b>Gimp</b>
<b>Filezilla</b>
<b>Yarn</b>
<b>Chrome</b>
<b>Firefox</b>
<b>Vlc</b>
<b>Htop</b>
<b>Mc</b>
<b>Nvtop</b>
<b>Nmon</b>
<b>Unrar</b>